

Quick Reference Guide

For the **sentec** Digital Monitoring System

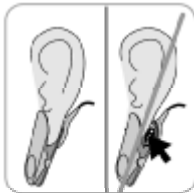
(Software version SMB SW-V06.20; MPB SW-V04.04)

Routine Use



Prior usage, verify that the message "**Ready for Use**" is displayed on the monitor. Check the "**Available monitoring time**" and the selected "**Patient mode**" (Adult/Neonatal). For sensor application on sites other than the earlobe verify that the parameters SpO₂/PR are disabled.

Sensor Application using an Ear Clip



1. Insert sensor into Ear Clip, remove cover of adhesive tape and place one small drop of Sensor Gel on surface of sensor. Hold horizontally to not drop the gel.

Note: You may also use clean tap water to wet the inside of the earlobe.

2. Pull earlobe in horizontal position, move in sensor horizontally from the side and attach the sensor from below to the back side of the earlobe. Close clip from above, then guide earlobe back in vertical position. Verify that the **whole dark surface of the sensor is covered by the earlobe**. Ensure that air gaps are eliminated between the skin and the sensor.



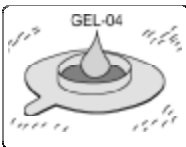
3. Wrap cable around the ear **twice** and tape the cable to the cheek as shown in the picture. Provide a small squeeze with your fingers to the sensor and ear clip as a final security check. Secure sensor cable with Clothing Clip on shirt or bed linen.

Sensor Application using a Multi-Site Attachment Ring



1. Select the appropriate attachment ring depending on the patient's age / skin condition at the measuring site (MAR-A/P/N or MAR-A/P). Clean the skin at the measuring site with an alcohol swab and let it dry. Remove hair if necessary.

2. Remove cover of adhesive tape of the attachment ring and attach the ring to the measuring site. Press gently on snap ring. Move your finger around the ring circumference to ensure a good adhesion of the entire adhesive to the skin.



3. Apply one small drop of Sensor Gel to the skin area in the center of the attachment ring (**Note:** Instead of Sensor Gel you may use one small drop of clean tap water).



4. Gently press the sensor into the attachment ring until it snaps in. Twist the sensor in the ring and press the sensor gently against the skin to spread the Sensor Gel. Ensure that air gaps are eliminated between the skin and the sensor. Tape the cable to the skin and secure it with Clothing Clip on shirt or bed linen. For forehead/cheek placement first wrap the cable **twice** around ear.

Note: Alternatively you may first click the sensor into the Multi-Site Attachment Ring and then attach the assembly to the skin.

Monitoring

Verify that PCO₂ initially is rising (PCO₂ stabilization period) and that the readings for SpO₂ and PR – if enabled - are stable. If needed reposition the sensor.



Site timer on monitor will count down 8 hours and trigger a message if the site time has elapsed. Inspect the sensor site every 8 hours.

After Monitoring

When monitoring is complete, or every 8 hours, whichever occurs first, remove sensor from patient, remove and discard the Ear Clip or Multi-Site Attachment Ring, wipe clean the sensor with an alcohol prep pad and insert into the docking station. As you close the door a sensor calibration will start automatically.

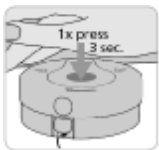
**Wipe sensor
clean after use!**



MAINTAIN MONITOR READINESS!

Always keep the monitor switched ON and store the Sensor in the Docking Station.

Maintenance Intervals



4x

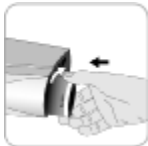


Membrane: Change sensor membrane periodically as requested by the monitor. Place membrane change tool on a solid flat surface, and keep the tool horizontally while repeating the following procedure **4 times**:

- press down slowly, but firmly and hold for 3 seconds, then
- grab base of tool with one hand, turn top clockwise with other hand to next stop.

At the end lift the sensor to remove it from the tool and verify that the membrane is securely seated.

Confirm the membrane change on the monitor and place the sensor in the docking station. A calibration will start.



Gas Cylinder: Gas Icon show percentage of gas remaining in cylinder. Change cylinder approximately once every month depending on use.



Battery Operation: Battery Icon shows remaining battery capacity (new, fully charged battery of the SDM provides 6 hours of monitoring).

Note: Monthly check the expiration dates of the consumables. Replace expired products!

For additional information / instructions refer to the Instruction Manual, the Technical Manual or the respective Directions for Use.

sentec

SenTec AG, Ringstrasse 39, CH-4106 Therwil, Switzerland. www.sentec.ch

CE
0120

HB-005421-b